

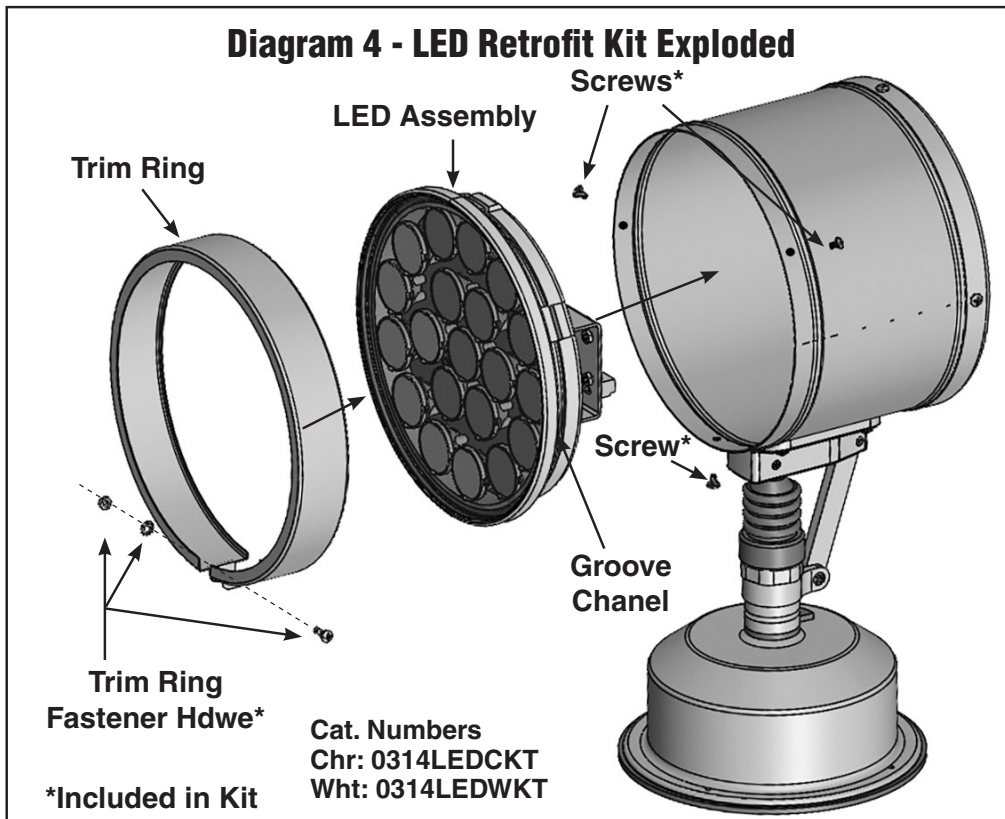
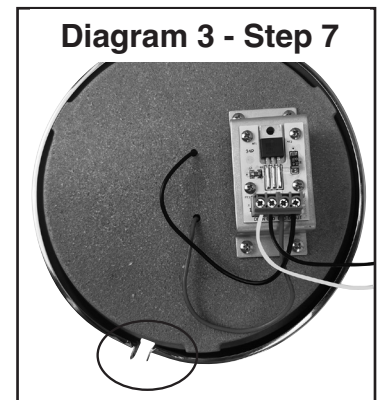
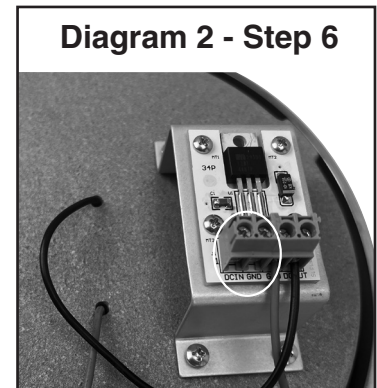
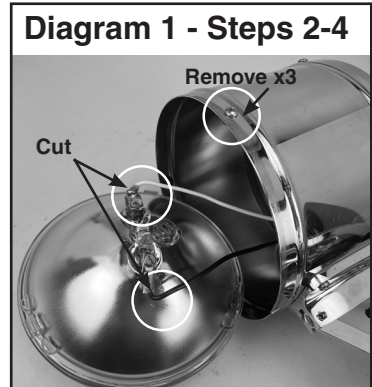
Fig. 0314LED 12V Retrofit Kit Instructions for 0314 Pilothouse Searchlights

Do Not Use on 24 or 32 volt systems

WARNING: The LED-glass-ring assembly is 3 separate pieces. Handle carefully. Do not cut zip tie to separate parts until step 7.

READ ALL INSTRUCTIONS BEFORE PROCEEDING

1. **Remove front ring** on existing searchlight by loosening the screw.
2. **Remove sealed beam unit** out from drum. (See Diagram 1)
3. **Cut black and white wires** close to sealed beam (See Diagram 1). Leave the (green) ground wire as is.
4. Remove 3 screws and nuts from outer front edge of drum. (See Diagram 1)
5. **Strip 1/4"** off black and white wires.
6. Connect wires to the back of the LED-glass-ring assembly in the DCIN and GND slots. Not polarity sensitive. Tighten screws to secure the wires (See Diagram 2).
7. Cut zip tie (See Diagram 3) and separate front ring, from glass plate and LED assembly. (**Handle carefully as glass and LED assembly are not connected**).
8. Place LED and glass assembly into drum. Use 3 screws provided with kit in existing holes to secure LED assembly to drum. Screws should seat into channel on LED Assembly. (See Diagram 4)
9. Add new front trim ring using provided screw, nut and lock washer. (Widest edge of front ring faces out.) (See Diagram 4) Be careful to protect the glass from falling out while securing the trim ring.
10. Discard items removed in steps 1-3.



PERKO, Inc.
16490 N.W. 13th Avenue
Miami, Florida 33169-5707
www.perko.com